



DOUGLAS COUNTY PARKS ADVISORY BOARD

REGULAR MEETING

WEDNESDAY, APRIL 10, 2024

AGENDA

Wednesday, April 10, 2024

5:30 PM

BOCC Conference Rooms A & B

Disclaimer - This packet is provided for informational purposes only and is subject to change. Some documents may have been unavailable at the time this agenda was prepared. For additional information, contact the responsible staff person.

I. 5:30 PM

1. Call to Order

- a. Roll Call
- b. Approval of the Agenda

2. Approval of Minutes:

- a. Approval of Minutes from March 13, 2024

Attachment – Unofficial Parks Advisory Board Minutes from March 13, 2024

- b. Approval of Minutes from March 21, 2024

Attachment – Unofficial Parks Advisory Board Minutes from March 21, 2024

3. Citizen Comment

4. Discussion and Action Items

- a. Parks Historical User Group – REAL Colorado
- b. High Note Regional Park Presentation

Attachment – High Note Regional Park Presentation

c. High Line Canal Conservancy Presentations

Attachment – High Line Canal Natural Resources Management Plan Presentation

Attachment – High Line Canal Origin Trailhead Presentation

d. COSAC's Updates

e. Parks, Trails and Rueter-Hess Reservoir Activity Reports

5. Other Business/Discussion

6. Adjournment

***The Next Regular Meeting Will be Held on Wednesday, May 8, 2024 @ 5:30 p.m. ***

**DOUGLAS COUNTY PARKS ADVISORY BOARD
MINUTES OF THE MARCH 13, 2024, PUBLIC MEETING
100 THIRD STREET, CASTLE ROCK, CO 80104**

1. Call to Order

The meeting was called to order at 5:30 p.m.

a. Roll Call

Members Present

Jerrold Taylor, Chair
Steven Atkinson (remote)
Karen Hickman, Vice-Chair (remote)
Larry Ziegler

Members Absent

Hunter Richards

Maryna Sheveria, Staff Liaison
Nick Giaouque, Parks Program Manager
Steve Shoultz, CRPR, Assistant Director, PT&BG
Jay Sage, Chair of COSAC
Brian O'Malley, COSAC member
Kristy Thomas, Administrator, Parker Youth Sports – Hawks

b. Approval of the Agenda

During the meeting, Jerrod Taylor, Chair, discussed the need for a special session to address agenda items D and E. Members of the Parks Advisory Board are requested to provide their availability to Maryna Sheveria, following which the members will coordinate the scheduling of this special session.

Karen Hickman, Vice-Chair, motioned to approve the March 13, 2024, Agenda with items D and E removed.

Larry Ziegler, PAB member, seconded the motion.

All stated “aye”.

The motion passed 4-0.

2. Approval of Minutes from February 13, 2024

Larry Ziegler, PAB member, motioned to approve the February 13, 2024, Meeting Minutes.

Karen Hickmann, Vice-Chair, seconded the motion.

All stated “aye”.

The motion passed 4-0.

3. Citizen Comment

There was no citizen comment.

4. Discussion and Action Items

a. Parks Historical User Group – Parker Youth Sports – Hawks

During the meeting, Kristy Thomas, Administrator of Parker Youth Sports - Hawks, provided an overview of the Hawks club, detailing their activities, participation levels, and highlighted some of their challenges, particularly the shortage of fields for their sports activities. She emphasized the pressing need for additional fields due to the growing population. Kristy Thomas expressed gratitude for the collaboration with DC staff.

The Board had a question-answers session. Kristy Thomas shared that the Hawks club comprises a larger group of 7-10-year-olds but serves students from kindergarten through high school. She discussed the current field locations in Parker their club utilizes. Kristy Thomas stressed the necessity for at least four more multipurpose fields to accommodate all the children, proposing the inclusion of lights and artificial turf.

Kristy Thomas noted that baseball remains the most popular sport in Parker, while football is gaining traction. She elaborated on their involvement in the state tournament, which attracts numerous teams and participants over two weekends. She indicated that additional fields would enable the organization to host more tournaments, including lacrosse and football.

Kristy Thomas mentioned that sports complexes due to the diverse range of activities they can accommodate would be more useful. Regarding turf preferences, she mentioned that while some individuals prefer natural grass, synthetic turf offers advantages such as ease of base movement, pre-marked lines, reduced cancellations, and extended usability. Moreover, Kristy Thomas noted no observed increase in injuries on synthetic turf. Additionally, she highlighted the need for improved restroom facilities, favoring flushable units over portable toilets, and expressed interest in concession stand amenities.

b. COSAC's Updates

Jay Sage, Chair of COSAC, and Brian O'Malley, COSAC member, updated the Board on the COSAC's recent activities.

c. Parks, Trails and Rueter-Hess Reservoir Activity Reports

During the meeting, Steve Shoultz, Assistant Director of Parks, Trails, and Building Grounds, shared an update on Parks, Trails, and Rueter-Hess Reservoir activities. He provided details on several topics, including fishing at the Rueter-Hess Reservoir, purchasing a patrol boat and three boats for rent at Rueter-Hess Reservoir, external funding requests Parks staff received and upcoming presentations before the Parks Advisory Board.

5. Other Business/Discussion

There was no other discussion.

6. Adjournment

**Larry Ziegler, PAB member, motioned to adjourn.
Steven Atkinson, PAB member, seconded the motion.**

**All stated “aye”
The meeting adjourned at 6:38 p.m.**

**DOUGLAS COUNTY PARKS ADVISORY BOARD
MINUTES OF THE MARCH 21, 2024, PUBLIC MEETING
100 THIRD STREET, CASTLE ROCK, CO 80104**

1. Call to Order

The meeting was called to order at 5:30 p.m.

a. Roll Call

Members Present

Jerrold Taylor, Chair
Steven Atkinson (remote)
Karen Hickman, Vice-Chair
Larry Ziegler

Members Absent

Hunter Richards

Maryna Sheveria, Staff Liaison
Nick Giauque, Parks Program Manager
Steve Shoultz, CRPR, Assistant Director, PT&BG

b. Approval of the Agenda

**Larry Ziegler, motioned to approve the March 21, 2024, Special Meeting Agenda.
Steve Atkinson, PAB member, seconded the motion.**

**All stated “aye”.
The motion passed 4-0.**

2. Citizen Comment

There was no citizen comment.

3. Discussion and Action Items

a. Tax Prioritization Presentation Discussion

Steve Shoultz, Assistant Director of Parks, Trails and Building Grounds, presented the Tax Prioritization process to the PAB members.

b. Requests for Funding Criteria Discussion

The Board had a discussion on the funding criteria.

4. Other Business/Discussion

There was no other discussion.

6. Adjournment

**Larry Ziegler, PAB member, motioned to adjourn.
Steven Atkinson, PAB member, seconded the motion.**

**All stated “aye”
The meeting adjourned at 6:26 p.m.**



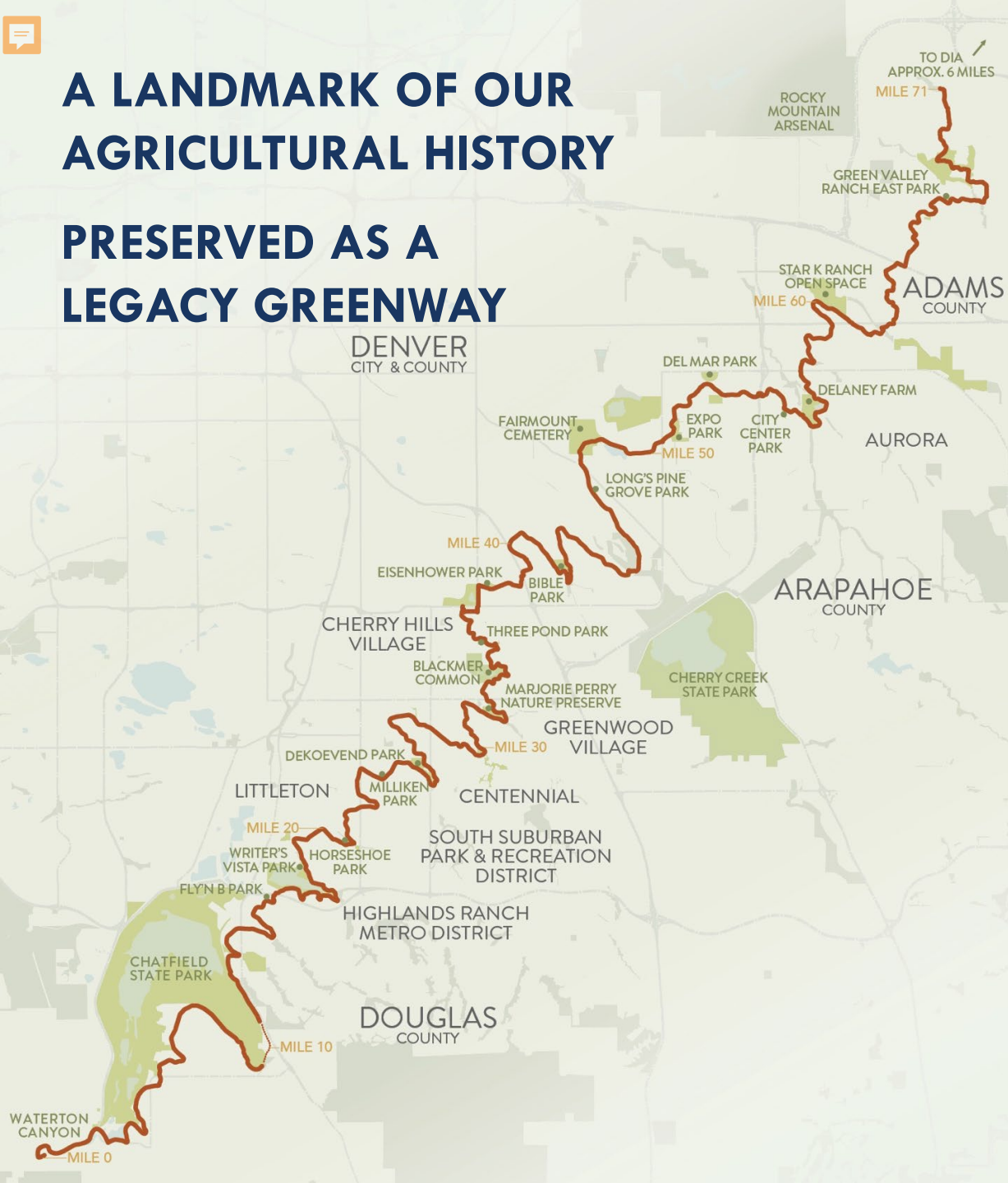
HIGH LINE CANAL CONSERVANCY

Connecting Communities – Connecting Nature
From the Foothills to the Plains

Photo credit: Evan Anderman

High Line Canal Natural Resources Management Plan
Douglas County PAB Presentation
April 2024

A LANDMARK OF OUR AGRICULTURAL HISTORY PRESERVED AS A LEGACY GREENWAY



860 ACRES

(more than NYC's Central Park!)



340,000

residents within one mile



1 MILLION

trail users per year



Photo provided by Denver Water

HAND DUG IN 1883
ACQUIRED BY DENVER WATER IN 1924
OPENED TO RECREATION IN 1970



HIGH LINE CANAL
CONSERVANCY



Photo credit: Evan Anderman

OUTLIVING ITS HISTORIC USE 60-80% OF WATER LOST



HIGH LINE CANAL
CONSERVANCY



Photo provided by Denver Water

LAST CENTURY'S INFRASTRUCTURE



HIGH LINE CANAL
CONSERVANCY



Photo credit: Evan Anderman

THIS CENTURY'S OPEN SPACE NETWORK



HIGH LINE CANAL
CONSERVANCY



Photo credit: Evan Anderman



23,000+
trees



190+
bird species



25+
mammal species



15+
Reptile
species



HIGH LINE CANAL
CONSERVANCY



Photo credit: Evan Anderman

PRESERVE, PROTECT AND ENHANCE THE 71-
MILE-LONG CANAL IN PARTNERSHIP WITH
THE PUBLIC



HIGH LINE CANAL
CONSERVANCY

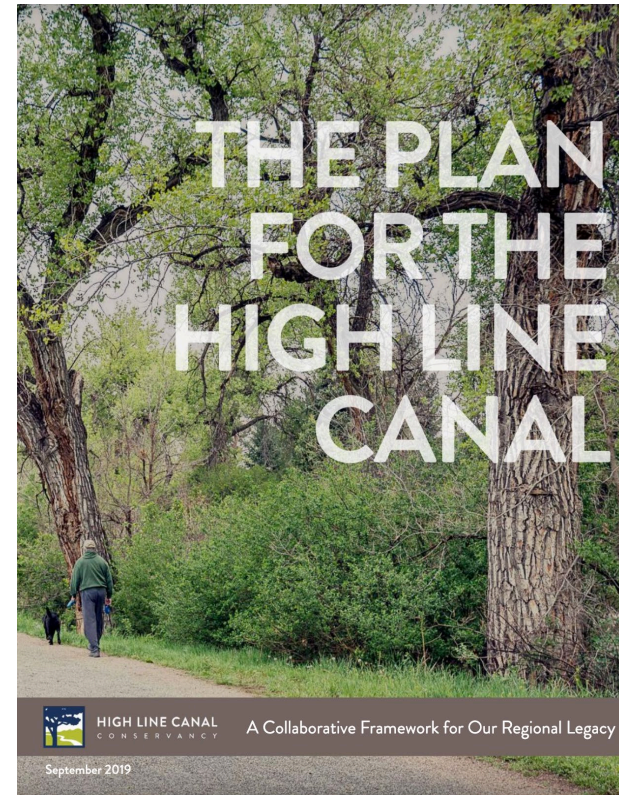
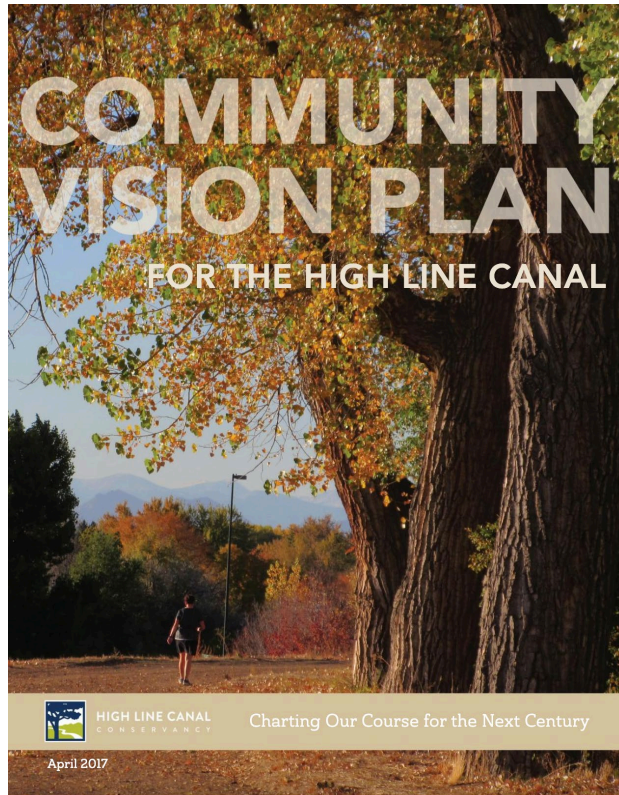
CANAL COLLABORATIVE REGIONAL MANAGEMENT STRUCTURE

1. Arapahoe County
2. City of Aurora
3. Cherry Hills Village
4. City and County of Denver
5. Denver Water
6. Douglas County
7. Greenwood Village
8. Highlands Ranch Metro District
9. Littleton
10. Mile High Flood District
11. South Suburban Parks and Rec. District
12. High Line Canal Conservancy
13. Southeast Metro Stormwater Authority



HIGH LINE CANAL
CONSERVANCY

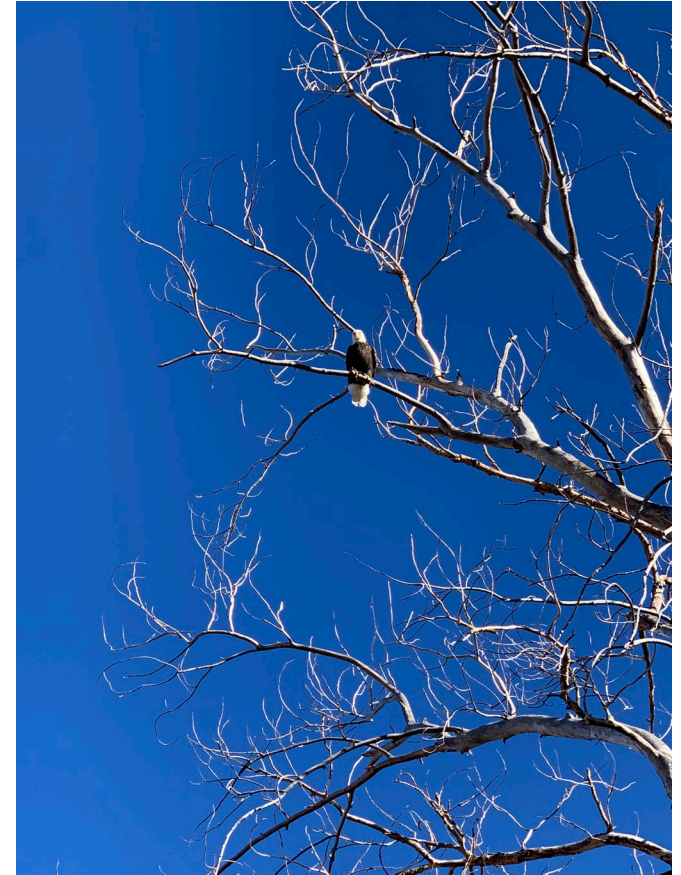
VISION + PLAN



HIGH LINE CANAL PROJECT HIGHLIGHTS

Project Highlights

- Improve the Canal for the variety of user groups that it serves
- Goal is to promote a high-functioning, low maintenance ecosystem
- Canal is a regional draw for recreation and historic preservation within the County
- Enhanced Canal benefits property values
- Planning engaged over 5,000 people from across the region
- The Canal provides recreation and interpretation free to the public



HIGH LINE CANAL
CONSERVANCY

NATURAL RESOURCES MANAGEMENT PLAN BACKGROUND

- During development of the Community Vision Plan, keeping the Canal natural was the most important priority for the community
- The Plan for the High Line Canal called for the development of a Natural Resources Management Plan (NRM Plan)
- Canal Collaborative developed the scope for the NRM Plan
- Steering Committee Includes:
 - Douglas County Parks, Trails and Building Grounds
 - Arapahoe County Open Spaces
 - Denver Parks and Recreation
 - Mile High Flood District
 - High Line Canal Conservancy



NATURAL RESOURCES MANAGEMENT PLAN SCOPE

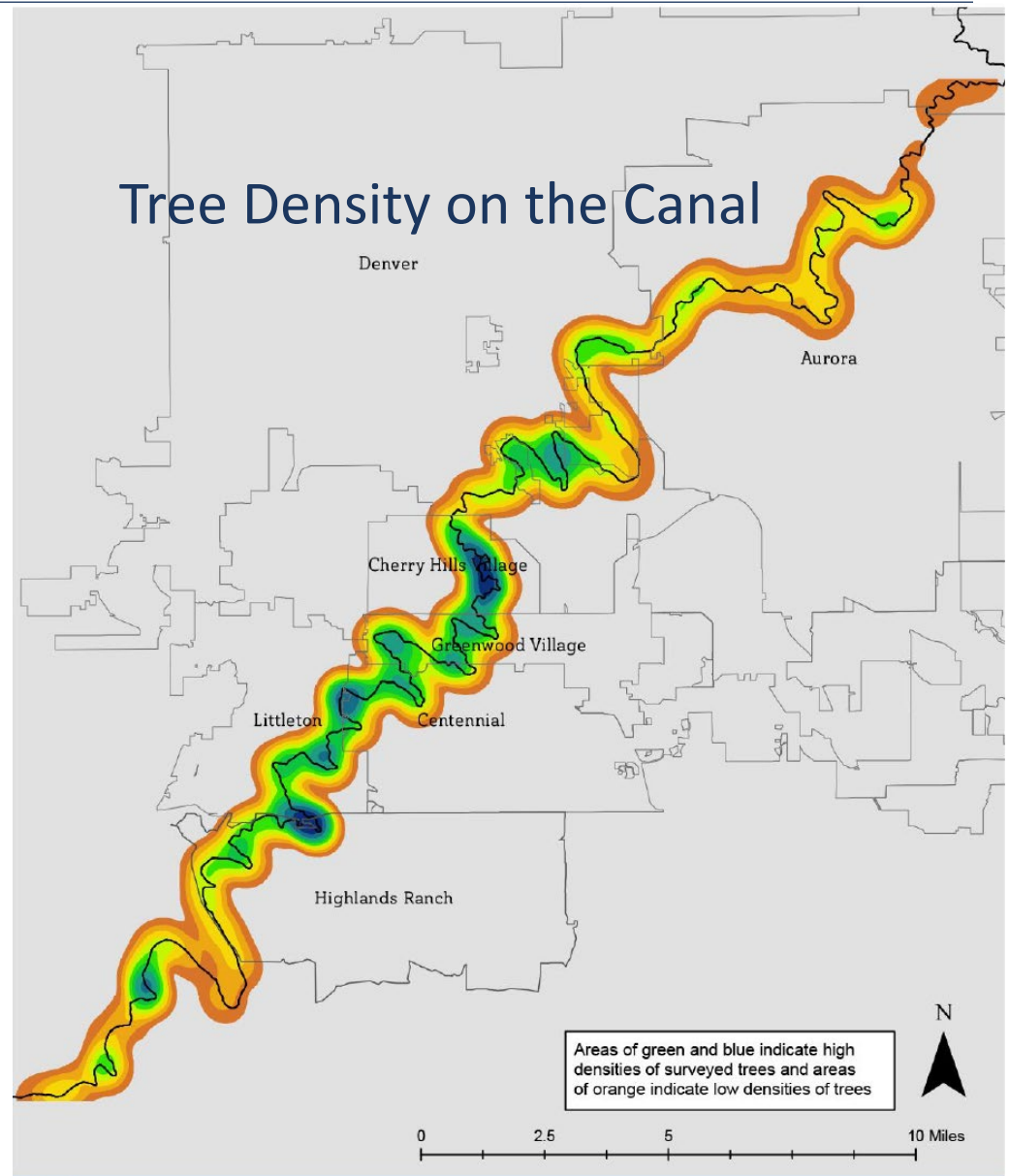
The full scope is included in our funding request.

1. Assessment of Existing Conditions
2. Formalizing Goals, Defining Subareas and Setting Targets
3. Maintenance of Existing Resources
4. Natural Resource Enhancement Strategies
5. Operations and Management Structure Recommendations
6. Public Communications Planning



2016 TREE INVENTORY OVERVIEW

- Project of the High Line Canal Working Group
- Inventoried all trees greater than 6" in diameter
- Identified trees in need of pruning or removal



2016 TREE INVENTORY NUMBERS

Most Common Trees on the Canal

Tree Type	Count	% of Total Trees
Eastern Cottonwood	7,339	31%
Green Ash	3,317	14%
Siberian Elm	2,821	12%
Lanceleaf Cottonwood	1,777	8%
Peachleaf Willow	1,201	5%
Boxelder	998	4%
Narrowleaf Cottonwood	882	4%
Crack Willow	741	3%
Russian Olive	730	3%
Common Hackberry	516	2%
TOTAL (Top 10)	20,322	86%



Trees by Jurisdiction

Jurisdiction	Total.Trees	%of.Total.Trees	Miles.of.Trail	Trees/Mile
Douglas(County)	2,735	12%	7.5	365
HLR	2,967	13%	7.2	412
SSPRD	4,839	20%	9.7	499
GWV	2,466	10%	5.6	440
CHV	2,342	10%	3.9	601
Denver	5,144	22%	17.6	292
Aurora	3,184	13%	11.2	284



HIGH LINE CANAL
CONSERVANCY

2016 TREE INVENTORY FINDINGS

While the cottonwoods are the defining tree on the Canal, many are reaching the end of their natural lifespan (70 to 120 years)

Challenges face many of the Canal's most prevalent tree species:

1. Riparian trees are challenged by a lack of water
 - a. 43% Cottonwood
 - b. 7% Willow
2. Ash trees are threatened by the emergence of the Emerald Ash Borer
 - a. 14% Green Ash
3. Russian olive and Siberian Elm are considered invasive
 - a. 12% Siberian Elm
 - b. 3% Russian olive

Nearly 80% of the Canal's canopy will be challenged in the coming years



HIGH LINE CANAL
CONSERVANCY

TREE PLANTING OPPORTUNITIES

- The Conservancy is raising funds to support tree planting in Douglas County and HRMD
 - \$180,000 for Douglas County tree planting and watering by 2027
 - \$180,000 for HRMD tree planting and watering by 2027
- Guidance from the NRM Plan will be critical to develop preferred planting approaches



FUNDING REQUEST DETAIL

- The NRM Plan is anticipated to cost \$528,000
 - Existing Conditions Assessment: \$73,000
 - Management Plan: \$455,000
- Request to Douglas County: \$15,000 (3% of the total project cost)



THANK YOU!



HIGH LINE CANAL CONSERVANCY

Connecting Communities – Connecting Nature
From the Foothills to the Plains

highlinecanal.org | hello@highlinecanal.org



HIGH LINE CANAL

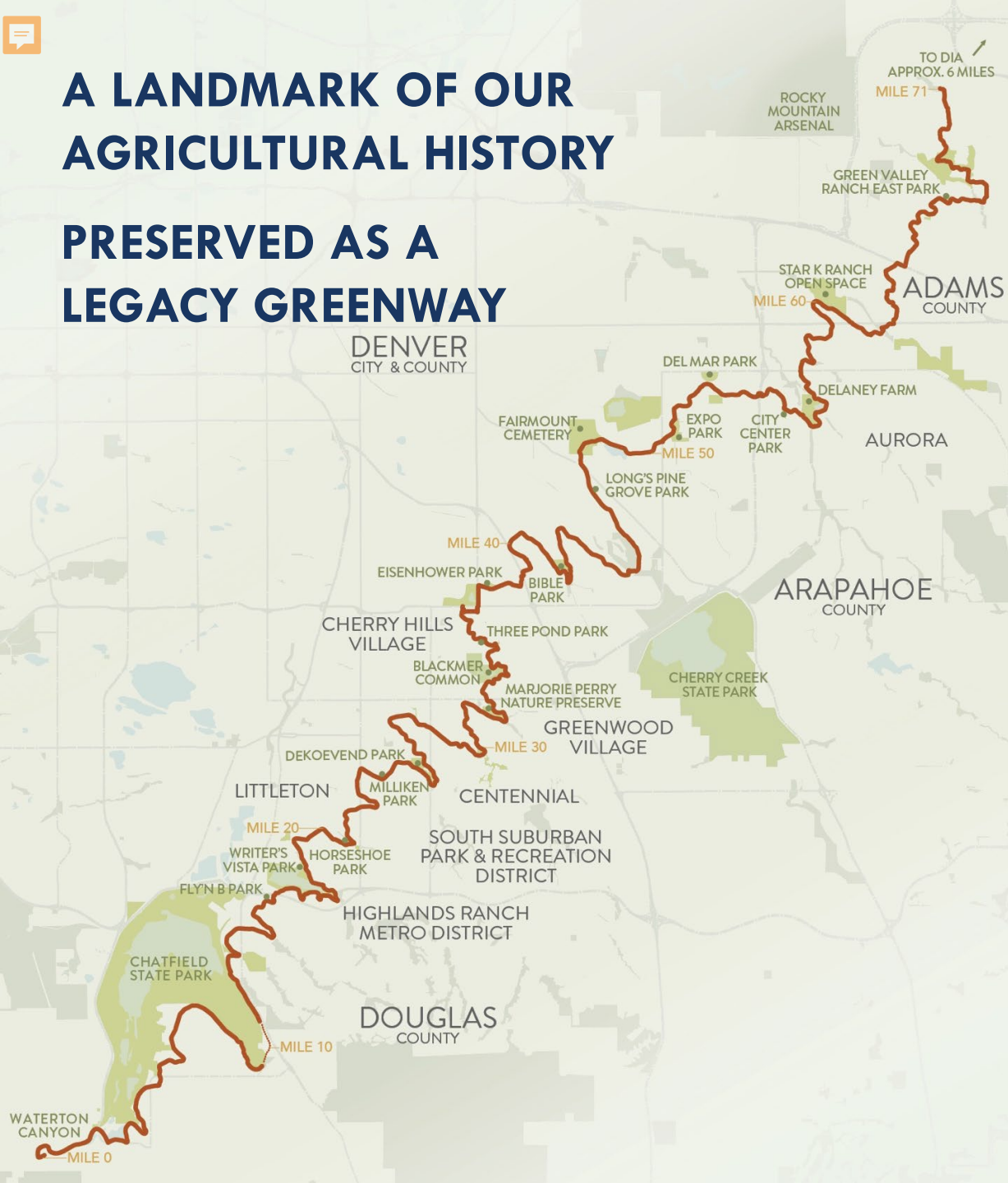
CONSERVANCY

Connecting Communities – Connecting Nature
From the Foothills to the Plains

Photo credit: Evan Anderman

High Line Canal Origin Trailhead
Douglas County PAB Presentation
April 2024

A LANDMARK OF OUR AGRICULTURAL HISTORY PRESERVED AS A LEGACY GREENWAY



860 ACRES

(more than NYC's Central Park!)



340,000

residents within one mile



1 MILLION

trail users per year

HIGH LINE CANAL ORIGIN TRAILHEAD BACKGROUND

Background

- Small, informal trailhead at High Line Canal and Waterton Road
- The Plan for the High Line Canal identified this as a regional destination to interpret the Canal's history for all of Douglas County
- Public engagement specific to the trailhead was active throughout 2023



HIGH LINE CANAL
CONSERVANCY

HIGH LINE CANAL ORIGIN TRAILHEAD GOALS

Project Goals

- **Access and Accessibility** – evaluate opportunities to improve access to the trail in this location, including expanded circulation in the parking lot, enhanced access to the trail and improved accessibility for trail users
- **User Comfort and Enjoyment** – add amenities and furnishings along the corridor to improve the user experience
- **Leverage View Corridors** – enhance views of the foothills, Waterton Canyon, the Canal and Denver Water's Platte Canyon Reservoir
- **Reveal the Origin Story**– connect visitors to the Canal and its journey along the High Line from its beginning up Waterton Canyon
- **Interpret the Canal** –interpret the Canal's unique history, its contribution to the growth of the region and the story of water in the West



HIGH LINE CANAL ORIGIN TRAILHEAD HIGHLIGHTS

Project Highlights

- Improve accessibility of the trailhead for all user groups
- Balance maintenance responsibilities – the Conservancy will maintain signage and benches
- Engage Parks, Historic Resources and Open Space
- Respond to citizen desires for improved access and historic interpretation
- Provide recreation and interpretation free to the public



HIGH LINE CANAL
CONSERVANCY

PUBLIC ENGAGEMENT AND INPUT SUMMARY

Survey open from February 20th, 2023 through May 15th, 2023

Feedback Reach

205 Survey Respondents

80% of survey respondents have been to the Origin Trailhead

17 participants for in-person site walks, open house and meetings

Trail Use

92.1% Recreational

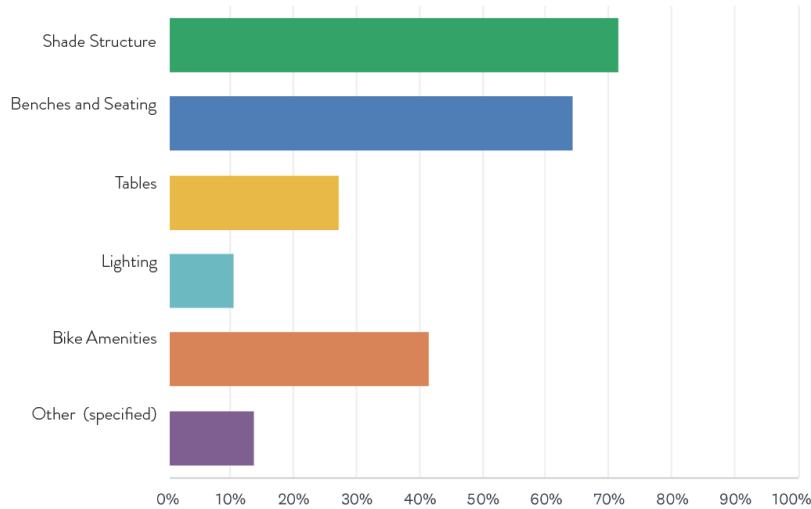
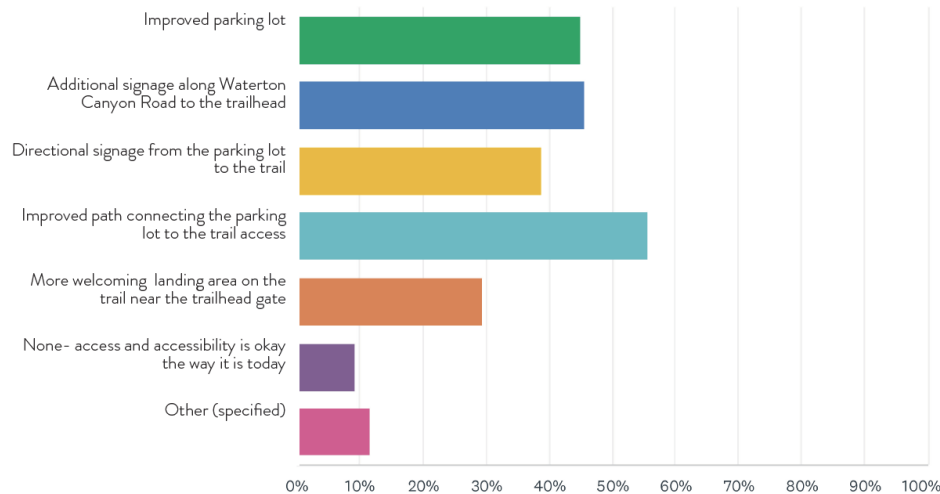
- 42% Walking
- 36% Biking
- 9% Running
- 9% Birding



WHAT WE HEARD

- A bathroom at the trailhead is important
- Accessibility of the trail for people with disabilities is a priority
- Respect the quiet, natural aesthetic of the trail in this location
- Trail surface improvements could help make trail more accessible
- Prioritize sun and rain shelters
- Safety and trail etiquette education are important
- Telling the story of the Canal, water and local history is a priority

PUBLIC ENGAGEMENT AND INPUT SUMMARY



Access and Accessibility Feedback

56% Improved path connecting the parking lot to the trail access

46% Additional signage along Waterton Canyon Road to the trailhead

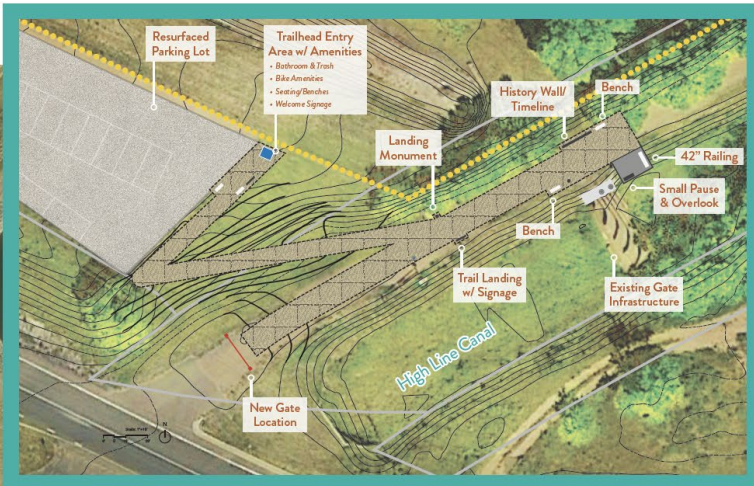
45% Improved parking lot

Site Elements

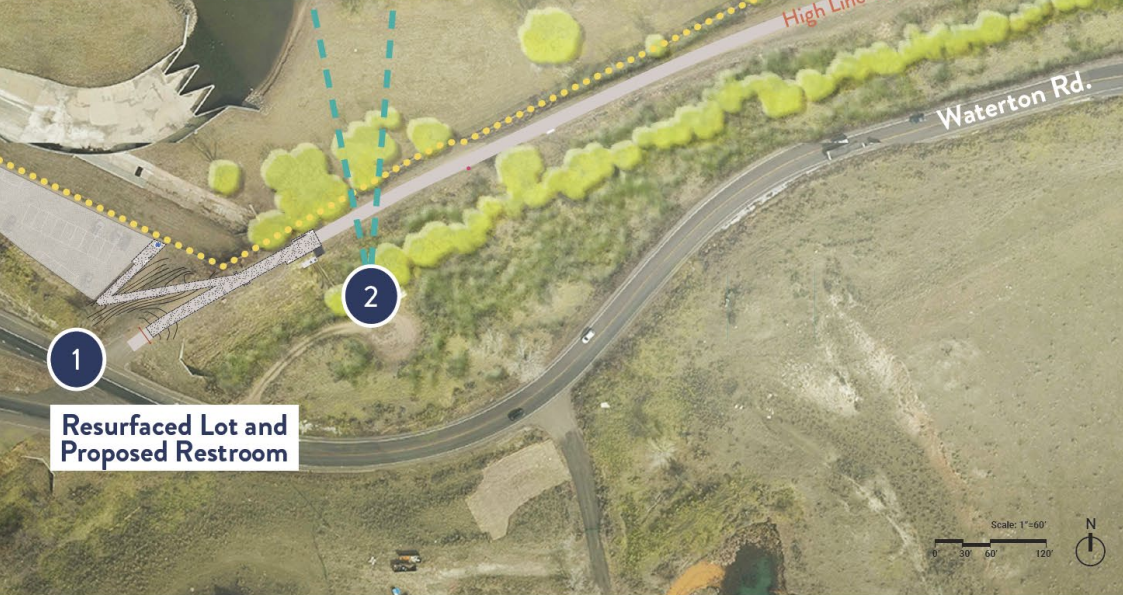
72% Shade Structure

64% Benches/ Seating

42% Bike Amenities



Trailhead Landing and North Overlook



Resurfaced Lot and Proposed Restroom

Platte Canyon Reservoir

4 Continued Interpretation

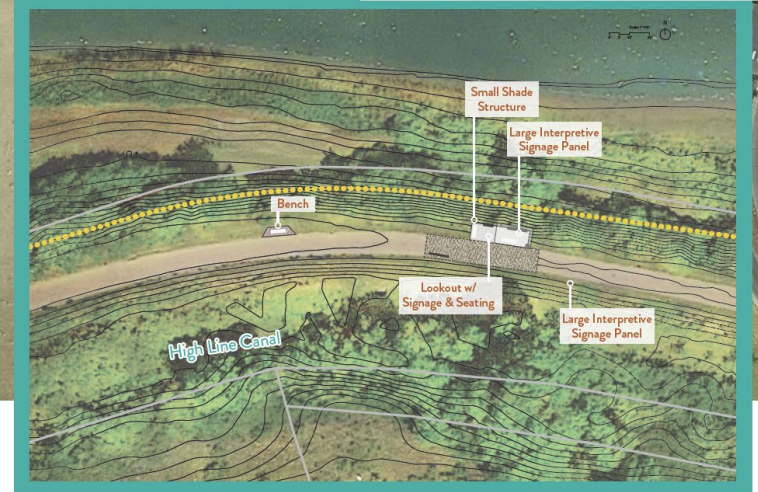
Additional historical canal signage to continue through mile marker 3

Included interpretation areas to include:

- Platte Canyon Gate
- Measurement Station
- Little Willow Creek Intersection

Continued to Mile 3

Interpretive Landing and Lookout



Trailhead

Trailhead Landing and North Overlook



Landing monuments at nodes that orient users and define pause moments



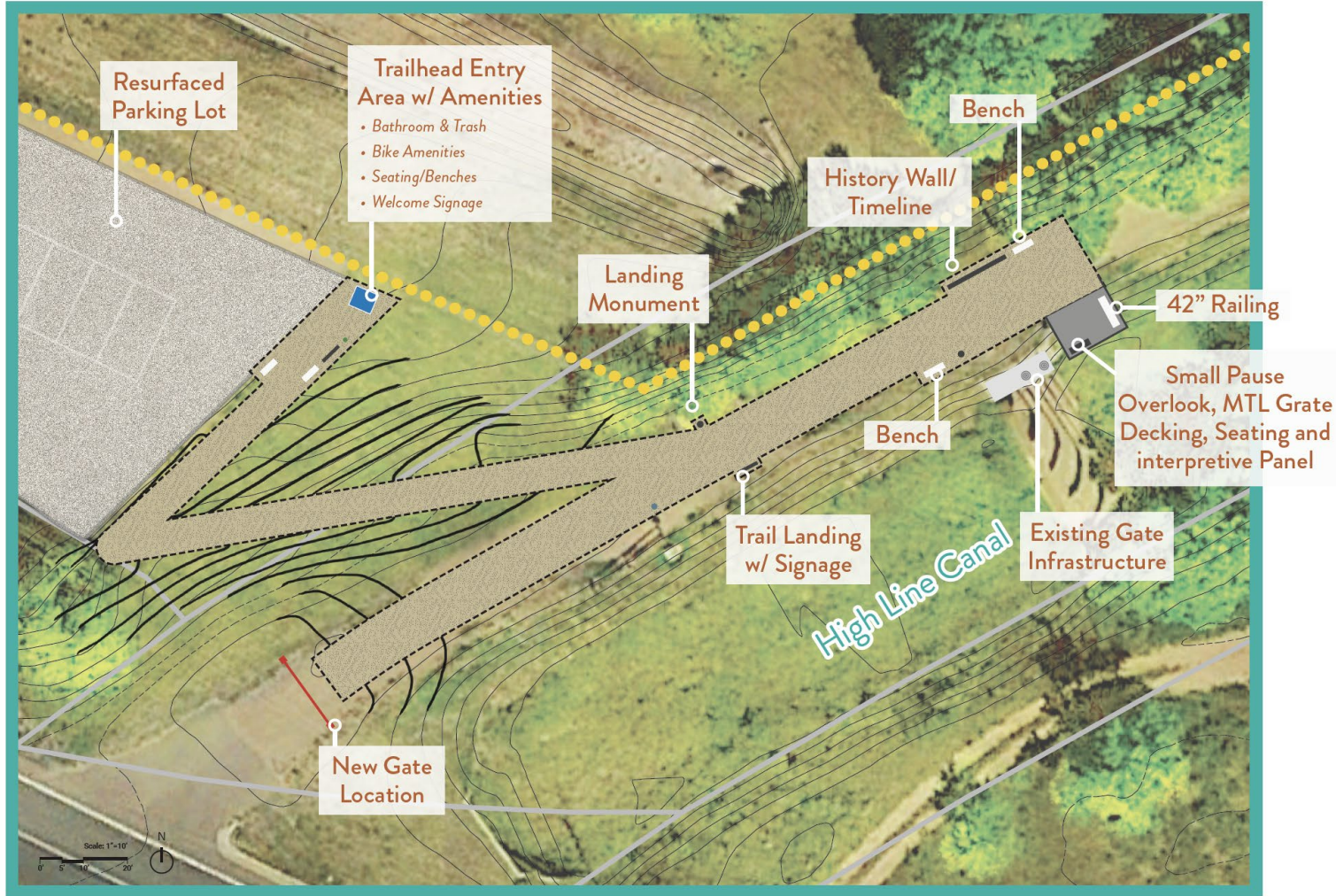
Small pause moments set off of path and framed by landscape



Historic Timeline



Port-o-let Enclosure



Trailhead Landing and North Overlook



Interpretive Landing and Lookout



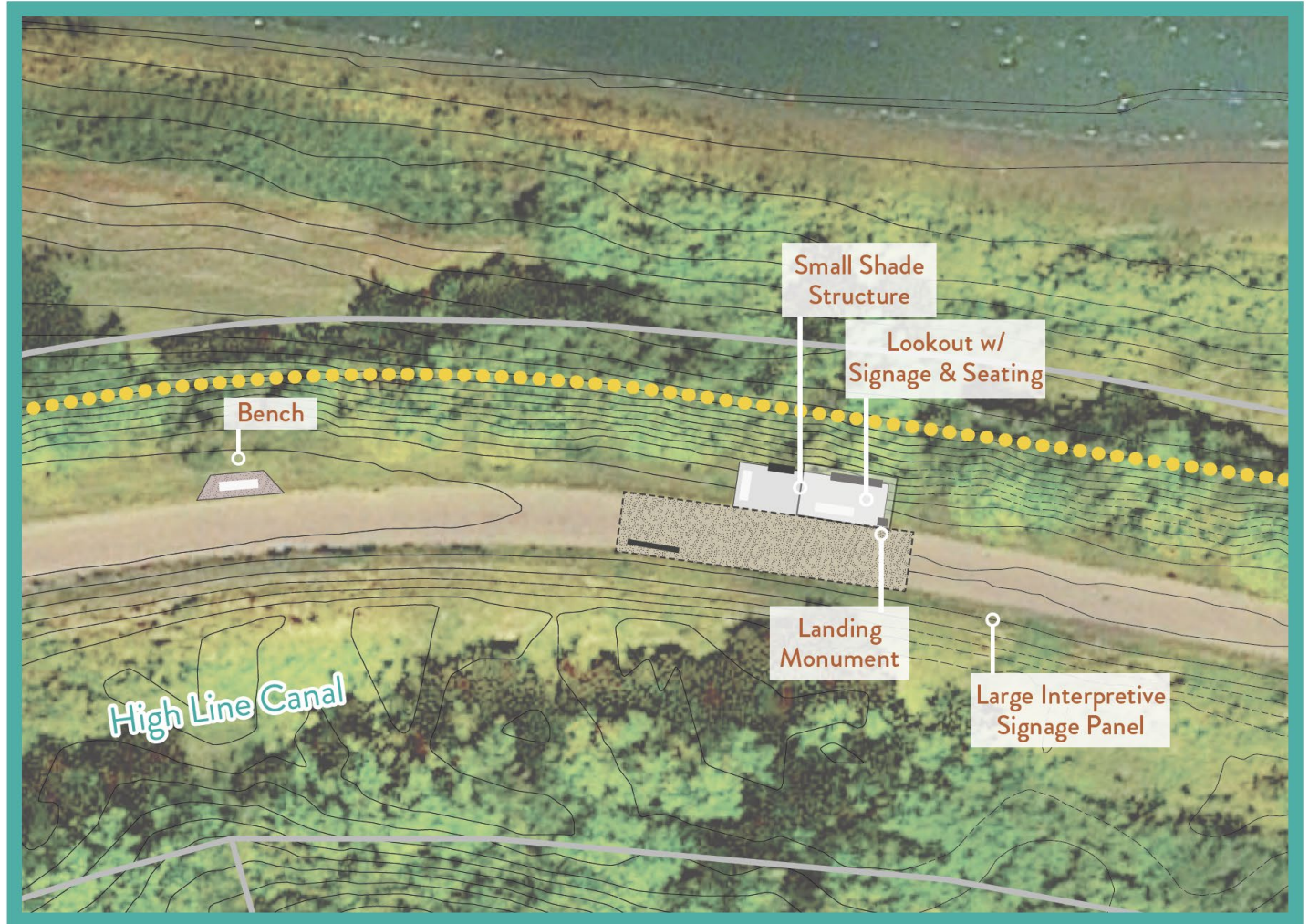
Small structure as destination for pause and rest



Metal, concrete and stone tie to Waterton Canyon Diversion Dam



Large scale mapping/visual interpretation



Interpretive Landing and Lookout



FUNDING REQUEST DETAIL

Funding to Date – Design and Engineering

- Douglas County: \$36,000
- High Line Canal Conservancy: \$98,000

Funding Request – Construction Documents and Implementation

- Douglas County: \$450,000
- High Line Canal Conservancy: \$150,000

When combining design and engineering with implementation, the request to Douglas County is to fund 66% of the overall project costs.



HIGH LINE CANAL
CONSERVANCY

THANK YOU!



HIGH LINE CANAL CONSERVANCY

Connecting Communities – Connecting Nature
From the Foothills to the Plains

highlinecanal.org | hello@highlinecanal.org

HIGH NOTE REGIONAL PARK



High Note Regional Park Overview



- | | | | | |
|------------------------------|---|---|--|------------------------|
| 1 VISTA KNOLL | 9 PLAYGROUND | 13 BRAID "ROOMS" (TYP.):
- SEATING
- CORNHOLE
- HAMMOCKS
- PING PONG TABLES
- MUSICAL INSTRUMENTS
- FIRE PITS
- PUBLIC ART
- OTHER ACTIVITIES | 17 RESTROOMS | 24 PARKING LOT |
| 2 FITNESS STAIRS | 10 FESTIVAL TERRACE:
- FLEXIBLE PLAZA SPACE
- SHADE STRUCTURES
- INTERACTIVE WATER FEATURE
- CAFE SEATING | 14 STAGE | 18 DOG PARK | 25 REGIONAL TRAIL |
| 3 BASKETBALL COURTS | 11 OVERLOOK PLAZA:
- FIRE PITS
- SEATING STRUCTURES
- SWING BENCHES
- CONNECTION TO CREEK | 15 MULTI-USE SYNTHETIC TURF FIELDS | 19 RESTAURANT PAD | 26 STORAGE BUILDING |
| 4 PICKLEBALL COURTS | 12 EVENT LAWN | 16 SHADED PICNIC GROVE | 20 FOOD TRUCK AREA | 27 WATER QUALITY BASIN |
| 5 OUTDOOR FITNESS EQUIPMENT | | | 21 MAINTENANCE BUILDING | |
| 6 BOULDERING / CLIMBING AREA | | | 22 SEMI TRUCK / BUS PARKING FOR PERFORMANCES | |
| 7 BOCCE BALL COURTS | | | 23 CONNECTION TO PARK A | |
| 8 SHADE STRUCTURE (TYP.) | | | | |

High Note Regional Park Overview



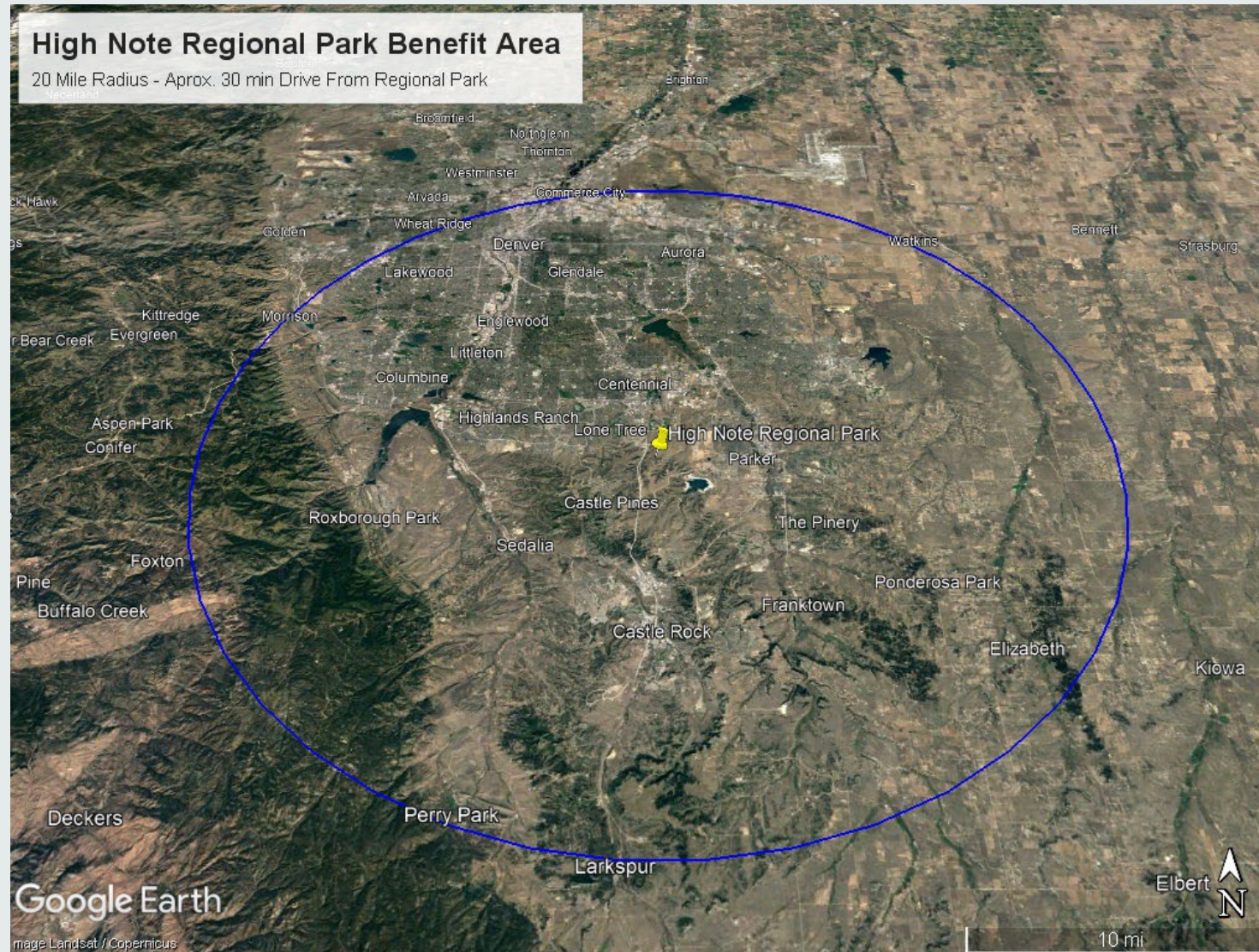
High Note Regional Park Overview



High Note Regional Park Overview

- Braided Trail System
- Festival Terrace & Plaza
- Amphitheater & Performance Area
- Elevated Canopy Walk
- Happy Canyon Creed Access Plaza
- Vista Overlook Hill
- Large Central Playground
- Restaurant Pad
- Five (5) New Multipurpose Fields
- Dog Park
- Pickleball Courts
- Basketball Courts

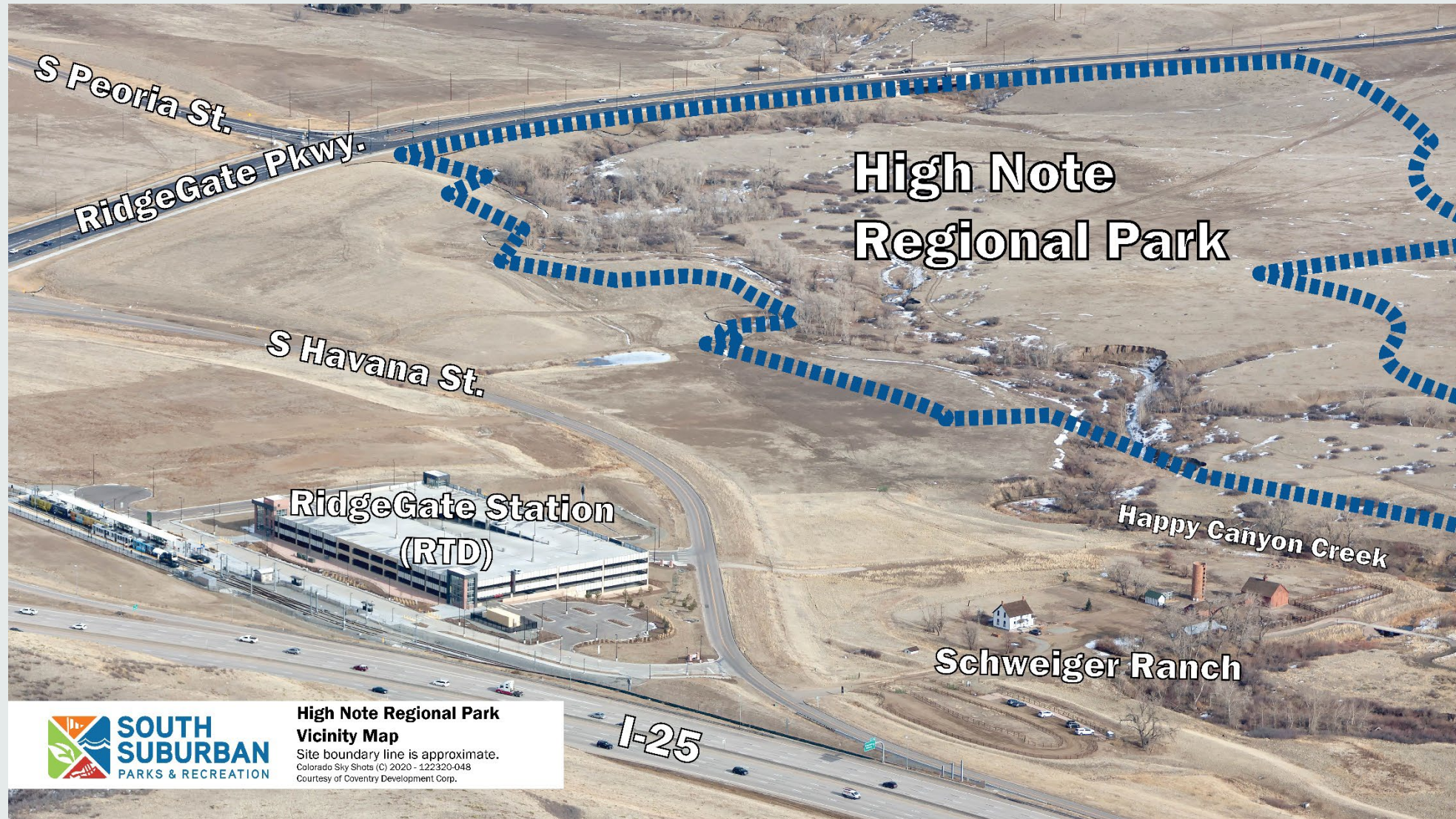
Benefit Area Map



High Note Regional Park Location



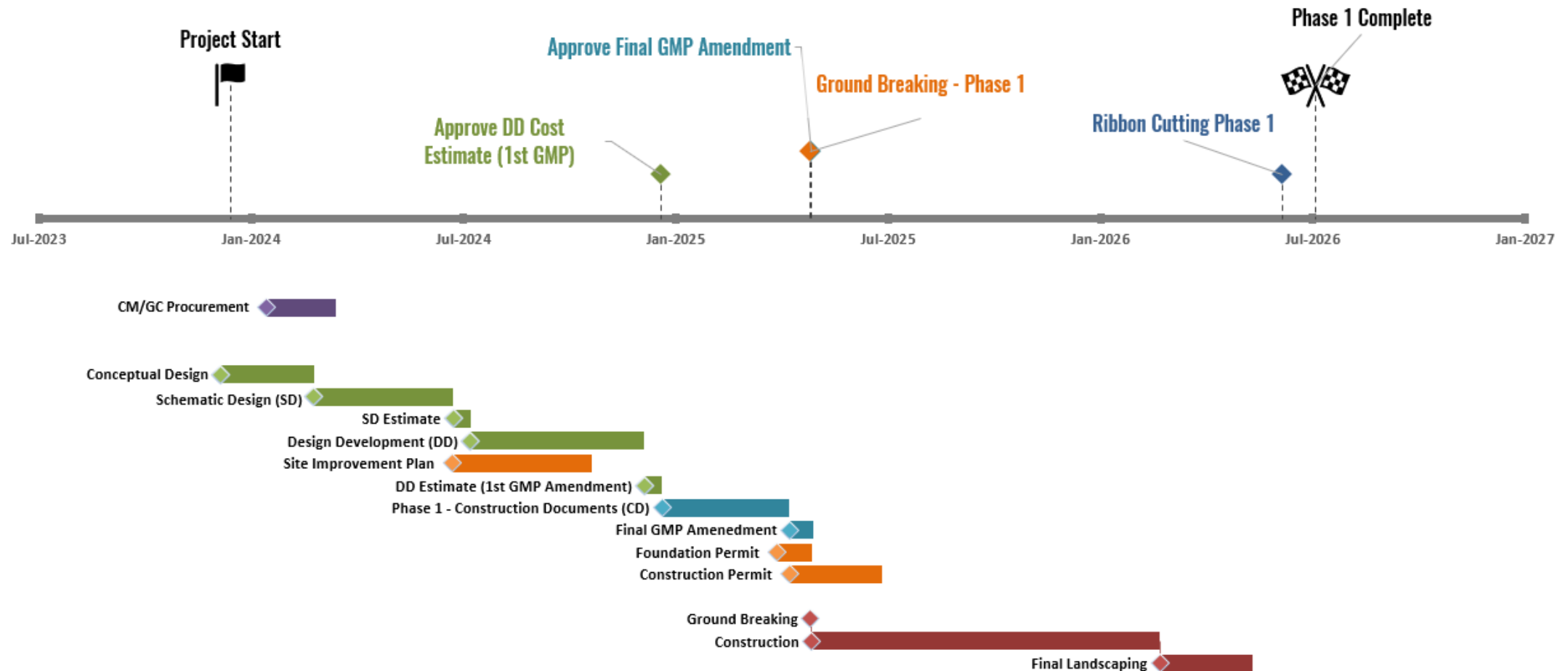
High Note Regional Park Vicinity Map



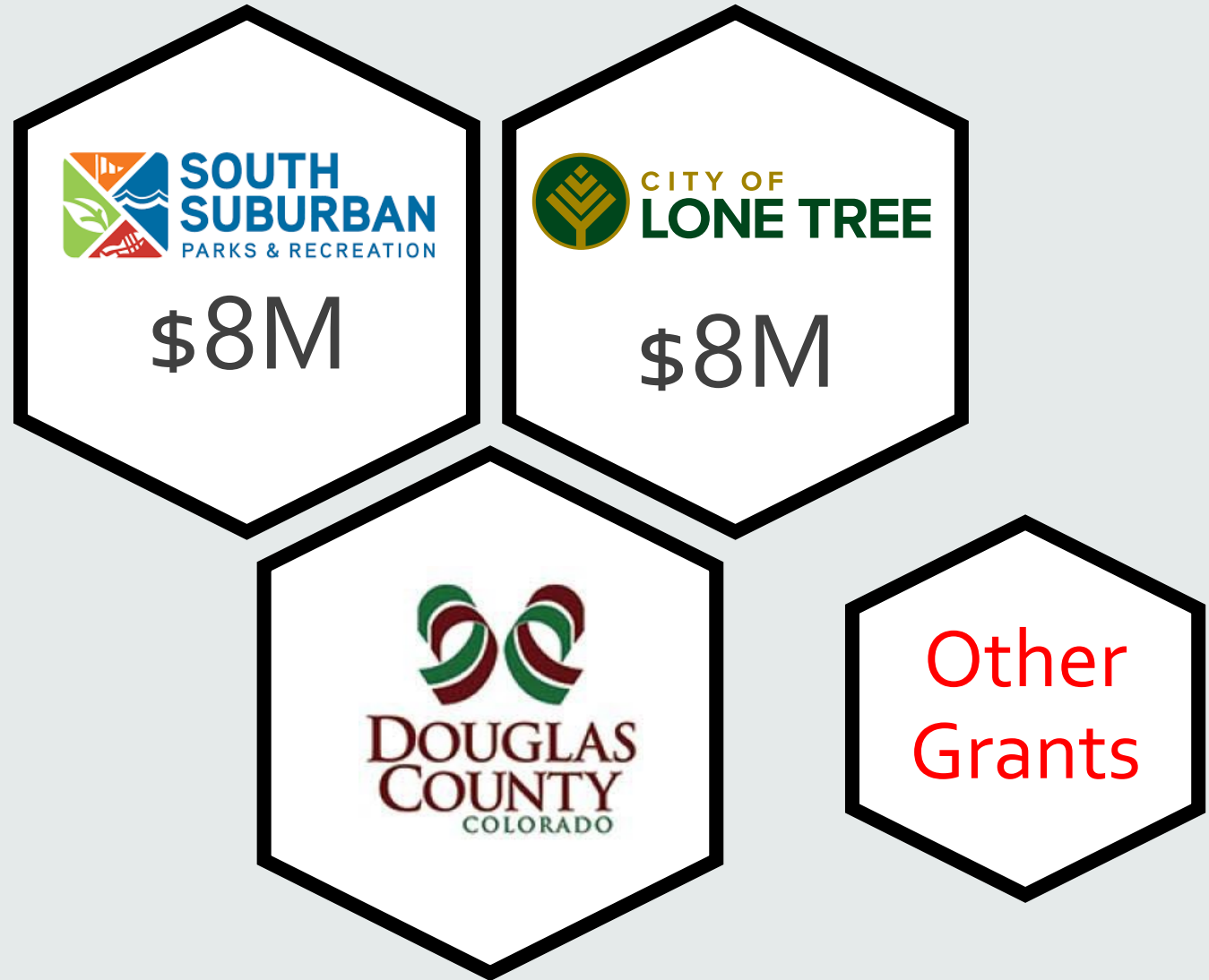
High Note Regional Park Vicinity Map

Site boundary line is approximate.
Colorado Sky Shots (C) 2020 - 122320-048
Courtesy of Coventry Development Corp.

High Note Regional Park - Projects Milestone Schedule



Project Stakeholders



High Note Regional Park Phase 1 Priorities

Anticipated Budget of \$25 Million

- Two (2) New Multipurpose Fields
- Parking Lot
- Braided Trail
- Playground
- Events Lawn
- Restrooms
- Maintenance Buildings
- Utilities and Infrastructure for Future Phases

High Note Regional Park Phase 1



Alignment with Douglas County Priorities



County Services



Economic Foundations



Health and Human Services



Historic and Natural Resources



Public Safety



Transportation



County Services

- All Maintenance will be the responsibility of South Suburban Parks & Recreation and City of Lone Tree

Joining The Ranks of Douglas County's Exceptional Regional Parks

**Highland Heritage
Regional Park**
(Highlands Ranch)

**Fairgrounds
Regional Park**
(Castle Rock)

**Bayou Gulch
Regional Park**
(Pinery/Franktown)

**Challenger
Regional Park**
(Parker)



Economic Foundations

- Has 6 of the top 7 taxpayers for Douglas county in the City of Lone Tree
- An investment for Lone Tree is an Investment for Douglas County
- High Note Regional Park will anchor and spur development of the Lone Tree City Center, a 440-acre urban downtown. The City Center is projected to add \$1.5-\$2 Billion in Assessed Value to the County, equating upwards of \$40 million/year in property taxes to Douglas County.
- In addition, the City Center will generate millions of dollars of tax revenue for the County from new commercial development. Assuming a similar commercial concentration to Cherry Creek North, the City Center would generate upwards of \$3.5 million/year in sales tax for Douglas County.
- The new Amphitheater is anticipated to generate \$45,000/year in sales tax revenue for Douglas County.
- The restaurant pad on the festival terrace is anticipated to generate \$50,000/year to Douglas County through sales taxes.

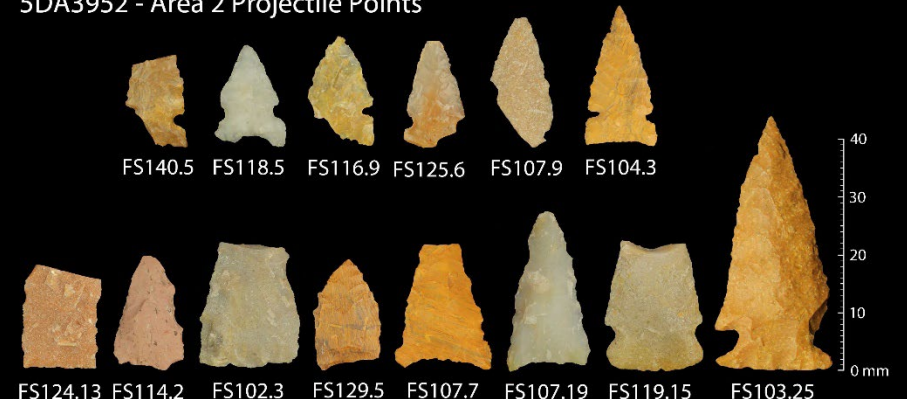
Historic and Natural Resources



5DA3952 - Area 1 Projectile Points



5DA3952 - Area 2 Projectile Points



Historic and Natural Resources

- The Park is adjacent to Happy Canyon Creek
- The park will provide access to the restored creek
- The Site is also adjacent to the historic Schweiger Ranch





Transportation

- One of the City of Lone Trees 6 Big Ideas is visionary transportation network.
- High Note Regional Park is located within a short walking distance of RTD RidgeGate Station



High Note Regional Park Overview



- | | | | | |
|------------------------------|---|---|--|------------------------|
| 1 VISTA KNOLL | 9 PLAYGROUND | 13 BRAID "ROOMS" (TYP.):
- SEATING
- CORNHOLE
- HAMMOCKS
- PING PONG TABLES
- MUSICAL INSTRUMENTS
- FIRE PITS
- PUBLIC ART
- OTHER ACTIVITIES | 17 RESTROOMS | 24 PARKING LOT |
| 2 FITNESS STAIRS | 10 FESTIVAL TERRACE:
- FLEXIBLE PLAZA SPACE
- SHADE STRUCTURES
- INTERACTIVE WATER FEATURE
- CAFE SEATING | 14 STAGE | 18 DOG PARK | 25 REGIONAL TRAIL |
| 3 BASKETBALL COURTS | 11 OVERLOOK PLAZA:
- FIRE PITS
- SEATING STRUCTURES
- SWING BENCHES
- CONNECTION TO CREEK | 15 MULTI-USE SYNTHETIC TURF FIELDS | 19 RESTAURANT PAD | 26 STORAGE BUILDING |
| 4 PICKLEBALL COURTS | 12 EVENT LAWN | 16 SHADED PICNIC GROVE | 20 FOOD TRUCK AREA | 27 WATER QUALITY BASIN |
| 5 OUTDOOR FITNESS EQUIPMENT | | | 21 MAINTENANCE BUILDING | |
| 6 BOULDERING / CLIMBING AREA | | | 22 SEMI TRUCK / BUS PARKING FOR PERFORMANCES | |
| 7 BOCCE BALL COURTS | | | 23 CONNECTION TO PARK A | |
| 8 SHADE STRUCTURE (TYP.) | | | | |



Thank you for your Partnership!