



Request to Create a Lead Public Health Clerk Title and to Add a Registered Dietician Position

Staff requests that your board approve creating one new title to our organization and adding a second Registered Dietician to our WIC program.

As our Vital Records program has grown way beyond our original expectations, we feel that it is time to create a lead position to maintain training and procedures in the Vital Records office as well as assisting with overall clerical duties of the department. This request would change the title of one Public Health Clerk position to Lead Public Health Clerk with no additional FTE being requested at this time.

At your board's June meeting, you approved DCHD entering into a partnership with Northeast Colorado Health Department for WIC services (pending state approval of the funding). That funding was approved, and acceptance of the funding appeared in an earlier item this evening. We are requesting to add one additional Registered Dietician to perform this work, this will take our total FTE in the department from 45 to 46.

Douglas County Commissioners

Board of Health

Executive Director

Medical Officer

Clinical Contractors

DC Early Childhood Council
1 FTE

Environmental Health
11 FTE

EPR / Disease Surveillance / Quality
8 FTE

Health Administration
11 FTE

Community Health
13 FTE

Executive Director DCECC

Assistant Director

Manager

Office & VR Manager

Assistant Director

EH Specialist II

Epidemiologist II

PH Clerk
6

Public Health Nurse

EH Specialist I
2

Epidemiologist I
3

Accounting Supervisor

MCH Coordinator

EH Supervisor

EPR Planner II

Grant Accountant

Health Educator
5

EH Specialist II

EPR Planner I

Performance Mgmt Spec

WIC Manager

EH Specialist I
5

Disease Investigation Spec.

QI Coordinator

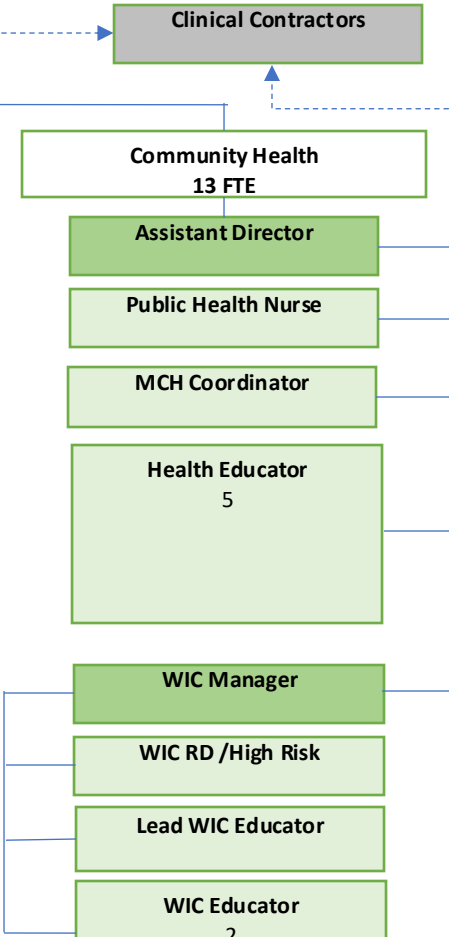
WIC RD /High Risk

Managers

Contractors

Lead WIC Educator

WIC Educator
2



Douglas County Commissioners

Board of Health

Executive Director

Medical Officer

Clinical Contractors

DC Early Childhood Council
1 FTE

Environmental Health
11 FTE

EPR / Disease Surveillance / Quality
8 FTE

Health Administration
11 FTE

Community Health
13 FTE

Executive Director DCECC

Assistant Director

Manager

Office & VR Manager

Assistant Director

EH Specialist II

Epidemiologist II

Lead PH Clerk

Public Health Nurse

EH Specialist I
2

Epidemiologist I
3

PH Clerk
5

MCH Coordinator

EH Supervisor

EPR Planner I

Accounting Supervisor

Health Educator
5

EH Specialist II

EPR Planner I

Grant Accountant

WIC Manager

EH Specialist I
5

Disease Investigation Spec.

Performance Mgmt Spec

WIC RD /High Risk
2

Managers

QI Coordinator

Lead WIC Educator

Contractors

WIC Educator
2

